

# CarbonMax

## Product Advantages

2.5mm full carbon fiber tube side

Single handle on long or short axis to help carry and position the image receptor

Virtually indestructible, shock absorbent, glass-filled polypropylene frame

Curved corners and radiused edges don't catch on bed sheets or clothes for easy placement

Smooth, non-porous surfaces for effective cleaning and superior infection control

Simple Twin-Lock™ dual locking design for easy panel application and removal

Ergonomic handle to reduce fatigue and provide a sure grip

Shock absorbent corner bumpers and inserts for additional drop protection and perfect fit

Fits most ANSI sized wireless DR panels and most tethered DR panels



The **CarbonMax™**, the toughest **CarbonCase** family member, features a full 2.5mm sheet of carbon fiber, providing the most substantial tube side protection. Available with and without a grid in a variety of sizes, the **CarbonMax** boasts a strength-to-weight ratio that make it pound for pound the ***world champion in detector protection.***

ReinaImaging



CASSETTE REPAIR

Reimagine Radiography



[www.reinaimaging.com](http://www.reinaimaging.com)



800-752-4918



[customer\\_service@reinaimaging.com](mailto:customer_service@reinaimaging.com)

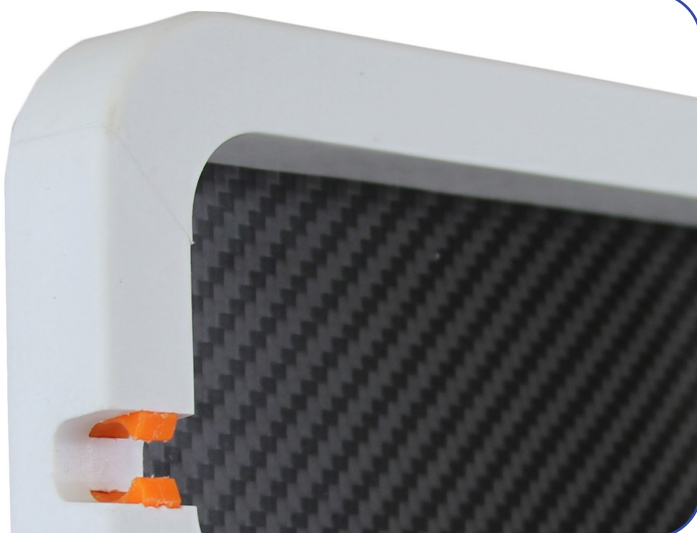
# Product Details



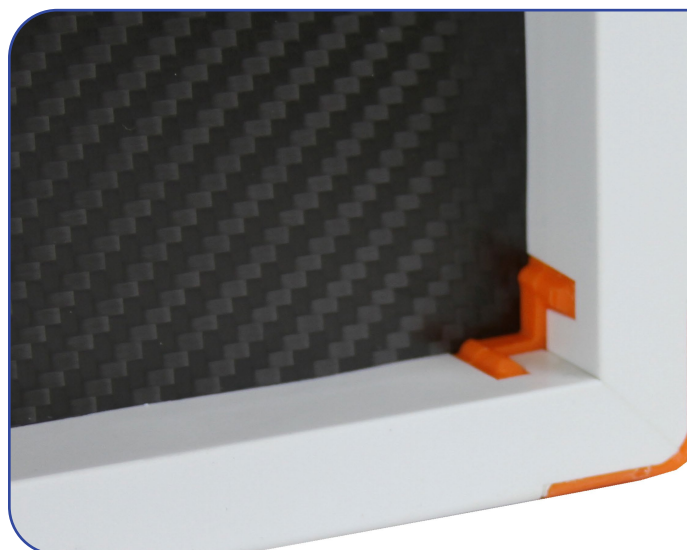
**Tube Side**



**Rear Side with Twin-Lock™**



**Curved Corners and Cable Management**



**Shock Absorbent Corner Bumpers**

# PRODUCT SPECIFICATIONS

Product Code	Product Name	Dimensions (cm)	Weight (kg)
17 x 17 Handle on Long Axis			
CC217	17x17 CarbonMax Grid Encasement	56.42 x 49.22 x 2.69	1.76*
CC2NG17	17x17 CarbonMax Mobile DR Panel Holder	56.42 x 49.22 x 2.69	1.76
14 x 17 Handle on Long Axis			
CC214	14x17 CarbonMax Grid Encasement	48.91 x 49.22 x 2.69	1.54*
CC2NG14	14x17 CarbonMax Mobile DR Panel Holder	48.91 x 49.22 x 2.69	1.54
10 x 12 Handle on Long Axis			
CC210	10x12 CarbonMax Grid Encasement	38.47 x 36.54 x 2.69	1*
CC2NG10	10x12 CarbonMax Mobile DR Panel Holder	38.47 x 36.54 x 2.69	1
24 x 30 Handle on Long axis			
CC224	24x30 CarbonMax Grid Encasement	38.47 x 36.54 x 2.69	1*
CC2NG24	24x30 CarbonMax Mobile DR Panel Holder	38.47 x 36.54 x 2.69	1

\*Plus Selected Grid

**Reina**Imaging



CASSETTE REPAIR

*Reimagine Radiography*



[www.reinaimaging.com](http://www.reinaimaging.com)



800-752-4918



[customer\\_service@reinaimaging.com](mailto:customer_service@reinaimaging.com)